



EOE

Teacher Training

Secure Your Future Now
Get in Touch
traintoteach@eoettc.com
www.eoettc.com

In collaboration with

Teaching 

Every Lesson Shapes a Life

So you want to be a Primary School Teacher?

Being a Teacher is the best job ever!

You get to work with the most creative, funny, loveable and excitable little people. As their teacher and role model you have a huge impact on shaping their lives and influencing their future. Every day you will have the chance to experience the satisfaction of knowing that you have taught the children something new and expanded their minds.

Our school based teacher training ensures that you develop the skills to be an amazing teacher who will make a real difference to the lives of the children in your care. On the job teacher training is ideal for those wanting to roll up their sleeves and get stuck in! It is the best feeling in the world knowing that you have influenced the lives of the next generation!

'The practical school-based nature of the training is valued highly by trainees. They appreciate the opportunity to learn from teachers who are experts in their field and then apply this learning in classroom situations.'
(Ofsted 2018)

We will support you to ensure that you reach your full potential and achieve your dream of becoming a teacher! We consistently have higher than national employment rates and our trainees feel prepared for the real world of teaching.

'The care and support for trainees' welfare are bespoke and of high quality. Creative solutions are found to address individual needs...Many trainees succeed directly as a result of the individualised, bespoke and highly effective support they receive.' (Ofsted 2018)

"NQT's say you are never fully prepared to be an NQT come September, however working with EOE has prepared me really well. I have been given access to high quality training and allowed the opportunity to gradually take on a class full time. If this hasn't prepared me for that jump - what will!"

About Us

Who are we?

EoE Teacher Training is a SCITT provider that collaborates with a number of Primary School Direct Lead Schools, to offer high quality Initial Teacher Training. We passionately believe that the best place to train to be a teacher is in a school (it seems obvious!), so we work with like minded professionals to ensure that our trainees receive the BEST in school training, to ensure they are fully prepared to be an outstanding teacher. In addition to working with School Direct Lead Schools, we also offer SCITT (School Centred Initial Teacher Training) places.

We guarantee local school placements which means you don't have too far to travel. We care about your wellbeing and work-life balance.

The Benefits

A school based training route

You will spend the training year observing best practice, undertaking tutorials with experienced teachers and most importantly building your confidence and skills gradually, whilst working with children.

You will have a wealth of experience and expertise at your finger tips within your school and you will have the chance to become a member of the school team. Also, the chance of getting a job at the end of your training year will be more likely, as you will have more practical experiences to bring to your new role.

We find that lots of our trainees secure a job in their main or second school. As they have already spent a year in a school, they are better prepared for the role of a teacher and therefore more prepared to be a NQT (Newly Qualified Teacher).

As EoE Teacher Training is a smaller provider, your individual training needs are important to us; you are not just a number.

The Course

How is the course structured?

Our school based training route means that you get to spend the majority of your week living and breathing the life of a primary teacher, to get a realistic representation of the life and work load of teachers today. You will regularly attend centre based training, where you will be trained by current, experienced professionals who are leaders within their schools.

We find that trainees who undertake this school based route are more fully prepared for the demanding role of a teacher and enter the profession more prepared for their NQT year.

Placements

You will spend the majority of your training year within your main placement school, building effective relationships and understanding progress. You will also undertake a second school experience for six weeks within your locality. This placement takes place in a different school, in another year group so that you are fully prepared to teach the whole of the primary phase.

EoETT will guarantee that these placements are local, and will take into account, where possible, personal circumstances such as childcare commitments and travel times.

In addition, with EoETT, all trainees will undertake a one week inclusion experience within a special school or PRU, so you have a sound understanding of the strategies you can use to support children with additional needs.

What support will I receive?

Every trainee will have a class based mentor and a senior mentor within their school, who will support and guide them through their training year. EoETT will also supply a Quality Assurance Tutor who will regularly visit you within your school, to give you further support and professional advice. You will have access to our online training portal where you can store your evidence for the award of QTS (Qualified Teacher Status) and access course materials and training documents.

All trainees will be qualified to teach children aged 3-11.

But you must choose a specialist age range to train within.

Age ranges available are: 3-7 or 5-11.

Entry Requirements



What qualifications do I need?

To qualify for this Primary route into teacher training you must have a degree. You must also have at least a grade C or grade 4 in GCSE English, mathematics and science.

If you don't have these GCSE grades, you may still be eligible for the course by taking an equivalency test. For more information please contact us.

We would also recommend that you have some recent primary school experience so you can reflect on this within your statement, however this isn't essential.

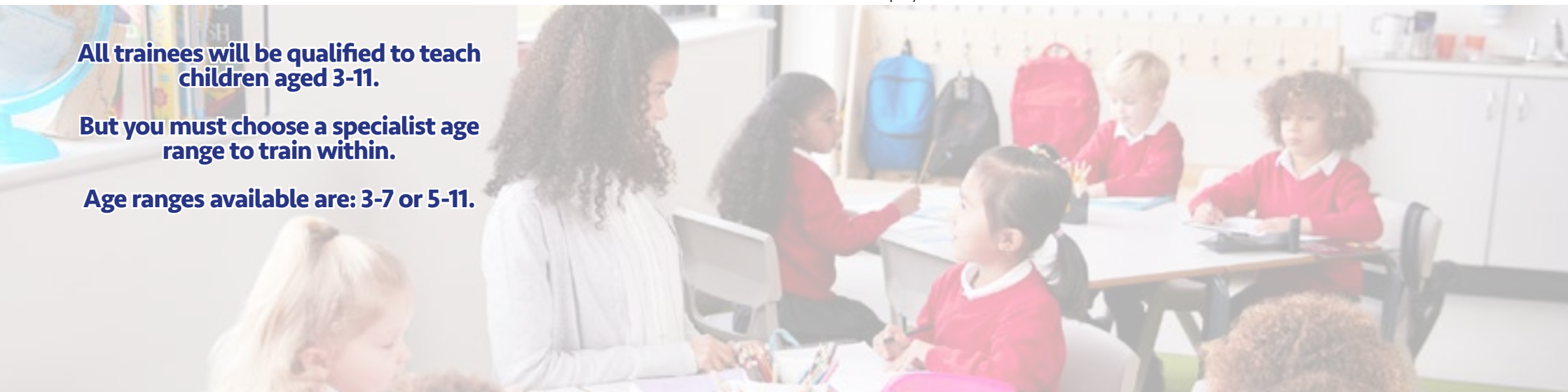
Applying

How do I apply?

All applications for a teacher training course must be made through either UCAS Teacher Training or DfE Apply.

We offer a free checking service if you would like feedback on your personal statement - don't hesitate to contact us!

You will need two references to support your application, please try to ensure that these are from a professional within your university, a school you have volunteered/ are working in or your current/ recent employer.



What Ofsted say about us:

"Leaders are utterly unwavering in their pursuit of excellence and uncompromising in their drive to continually improve the quality of provision and consequently the outcomes for trainees."

"The care and support for trainees' welfare are bespoke and of high quality. Creative solutions are found to address individual needs."

"Many trainees succeed directly as a result of the individualised, bespoke and highly effective support they receive."

"Trainees receive effective opportunities to develop their subject knowledge. They receive high-quality training from current practitioners, some of whom are specialist leaders in education (SLEs). Furthermore, they are supported by expert mentors to trial and test their learning back in school."

"The support they receive from their mentor and from lead mentors is highly effective. Trainees receive valuable support from their mentors."



The quality of leadership and management across the partnership is rated as Outstanding.

What our trainees say about us:



I have continuously felt supported. I would highly recommend this course to anyone.
-Abi

"If you are more of a practical learner then this is the best teacher training course to do. The training sessions give you useful ideas that you can try in your own teaching. I have honestly enjoyed every minute and found the workload manageable even with a young child."
- Tiffany

"If you want a well organised and personalised course EOE is the best provider to train with!"
-Zara

"I'm so glad I went with EoE and I would recommend them to anyone wanting to do their teacher training. On this course you are not just a number, you are an individual and the learning experience is catered for your individual development needs. I am truly grateful to every professional that has helped me."
- John



I have felt extremely supported throughout my training year. I feel valued as an individual and have found centre based training high quality, informative and varied.
- Jade

Routes to Qualified Teacher Status (QTS)

All applications must be made through either UCAS teacher training or DfE Apply.

SCITT Core places

You are a student during your training year and will pay course fees.

Financial Information

- Course Fee £8,500 (QTS only);
- £9,250 (QTS + PGCE);
- Student loans available;
- Maintenance loans available (depending on circumstances);
- Childcare grants may be available, dependant on household income

Qualifications needed

- GCSE grade C/4 or above in English, mathematics & science;
- Undergraduate Degree.

Additional information

- We will discuss which year group you would wish to train in to find a suitable placement school

Recommendations

- Recent work experience in a primary school.

School Direct Fee Funded

You are a student during your training year and will pay course fees.

Financial Information

- Course Fee £8,500 (QTS only);
- £9,250 (QTS + PGCE);
- Student loans available;
- Maintenance loans available (depending on circumstances).
- Childcare grants may be available, dependant on household income

Qualifications needed

- GCSE grade C/4 or above in English, mathematics & science;
- Undergraduate Degree.

Additional information

- We will discuss which year group you would wish to train in to find a suitable placement school

Recommendations

- Recent work experience in a primary school.

School Direct Salaried

These places are extremely competitive. You are employed by the school for your training year.

Financial Information

- Paid a salary to train;
- May have to self fund the course fees;
- No access to student finance;
- Optional PGCE (self funded).

Qualifications needed

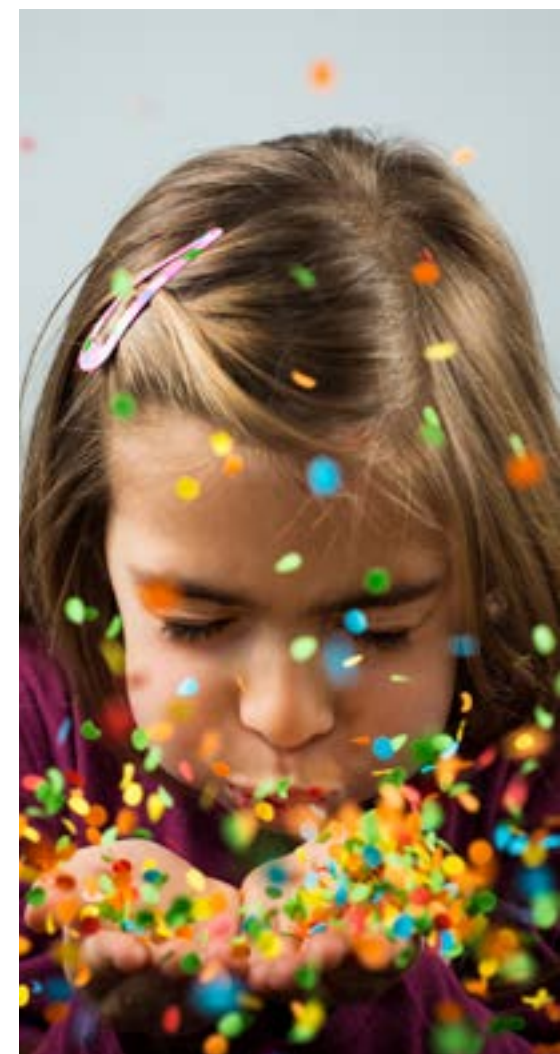
- GCSE grade C/4 or above in English, mathematics & science;
- Undergraduate Degree.

Additional information

- Course is suited to career changers;
- School and year group availability will depend on vacancies

Recommendations

- Recent work experience in a primary school.



Why complete the PGCE?

As a provider we are accredited to award QTS (Qualified Teacher Status), therefore we work with The University of Hull to give you the opportunity to complete an optional PGCE (Post Graduate Certificate in Education) qualification whilst you train with us.

By completing the PGCE alongside your QTS and studying at masters level, this gives you the opportunity to study education theory in more depth, therefore impacting positively on your classroom practice. **The PGCE option runs concurrently with the QTS programme; they are aligned and synchronised for the benefit of our trainees.**

All training takes place in Lincoln and you **do not need to travel to Hull for these training sessions; all lecturers travel to our training locations.**

You will be fully supported by The University of Hull staff and have access to their resources.

As the PGCE is Level 7 (masters level) trainees are expected to undertake an independent research approach, being proactive and motivated throughout their studies. The University of Hull will provide inputs to support assignments, and trainees will have access to a wealth of online resources, support networks and journals for independent study.

If you complete the QTS only course, you will submit one 5,000 word assignment to EoETT. If you choose to complete the QTS and PGCE course you will instead be expected to write two 5,000 word assignments, which will be submitted to The University of Hull.

- A PGCE qualification is essential if you wish to teach abroad, as QTS is only recognised in England and Wales;
- The PGCE from the University of Hull comes with 60 masters credits, which can go towards a full masters (180 credits);
- You will also have access to the extensive resources at The University of Hull, including those online;



- Access will be given to a range of online journals and articles to support your assignment writing;
- Be offered PGCE tutorials and advice;
- Be invited to the The University of Hull's graduation ceremony on successful completion;
- Have specific PGCE lectures and support;
- The assignments are linked back into your everyday practice within the classroom;
- If you choose to undertake the PGCE your fees will be £9,250, the QTS only route is £8,500.

'The PGCE assignments were well suited to the timings of the course'

Vision and Values

Our vision is to recruit, train and retain outstanding local teachers for our local schools, for the benefit of the local children

- **We value your individual circumstances;** we aim to keep applicants 'local' to their home address, so that travel costs are reduced. We also keep trainees in their local area, to reduce travel times to and from school, resulting in a better work life balance
- **We value your mental health;** we have strong support mechanisms in place, including a course counselor and also online support and guidance, if ever needed
- **We value the importance of time in school;** we deliberately structure the course to allow you to have the maximum time in school, teaching and observing, so you feel fully ready to be a teacher
- **We value your career and prepare you well for your NQT year;** we structure the course to gradually build up your teaching timetable, so by the end of the year, you feel confident and comfortable to lead the class and understand the full breadth of the role of the teacher. We prepare you well for interviews and employment by undertaking mock interviews and sharing comprehensive information about your strengths and next steps with your employing school. We want to retain you in teaching, so we keep in contact with past trainees and we are always here for advice and support

- **We value the importance of undertaking a range of experiences;** we ensure that you undertake a wide range of experiences and opportunities in your training year, to fully prepare you for the role of a teacher (SEND school experience being one example)
- **We value and encourage a commitment to lifelong learning;** it is essential that all trainees become a reflective practitioner, always striving for improvement and development
- **We value the importance of equal opportunities and inclusion;** we ensure that all aspects of the course promote the importance of equal opportunities and inclusion
- **We value your feedback;** we regularly ask trainees and partnership schools about how we can continually improve and develop the course, we never rest on our laurels and are always striving to improve
 - **We value YOU;** we aim to respond to the needs and talents of every trainee with compassion, equity and respect, to ensure that they reach their full potential. You are more than just a number!





Our partnership of schools is extensive and growing every day. We work with schools within Grantham, Lincoln, East Lindsey and Grimsby.

East of England Teacher Training (EoETT)

As a provider we have a number of SCITT places that can also be placed within our School Direct Partnerships. Therefore, when applying you can choose a SCITT code and we will discuss school availability in your locality.

If you are already working or volunteering in a school, we are happy to discuss training options and our partnership is always ready to welcome new schools.

Both SCITT and School Direct trainees will undertake exactly the same course and train together within their region.

Application codes:

Training provider code	2B6
QTS only	2TNC
QTS + PGCE	2TND

We have four School Direct partnerships with a variety of schools within each partnership. At interview we will discuss which year group you would wish to train in; vacancies within the partnerships will then be discussed with you.

Lincolnshire Schools ITT Partnership

- **Eagle Community Primary School (Lead School)**
- Bracebridge Infant and Nursery School
- Brant Broughton CofE and Methodist Primary School
- Chuter Ede Primary School (Newark)
- Coddington CofE Primary and Nursery School (Newark)
- Ermine Primary Academy
- Hartsholme Academy
- Manor Leas Junior Academy
- Mareham Le Fen CofE Primary School
- Navenby CofE Primary School
- Osgodby Primary School (Market Rasen)
- Potterhanworth CofE Primary School
- Skellingthorpe The Holt Primary School
- St Faith CofE Infant School
- St. Faith and St. Martin CofE Junior School
- St Giles Academy
- St John's Primary Academy (Bracebridge Heath)
- St Peter at Gowts CofE Primary School
- Welton St Mary's CofE Primary Academy

Application codes:

Training provider code	2HF
Fee paying QTS only	3BLS
Fee paying QTS + PGCE	3BLT
Salaried QTS only	3BLV
Salaried QTS + PGCE	3BLW

New schools regularly join the partnership, visit www.eoettc.com/school-partnerships for the most up to date list of schools in your area.

East Lindsey ITT Partnership

- **Coningsby St. Michael's CofE Primary School (Lead School)**
- Holy Trinity CofE Primary School (Tattershall)
- Horncastle Community Primary School
- Kirkby on Bain CofE Primary School
- Ruskington Chestnut Street CofE Academy
- Spilsby Primary Academy
- St Andrews C Of E Primary School (Woodhall)
- Stickney CofE Primary School and Pre-School

Application codes:

Training provider code	4E2
Fee paying QTS only	W739
Fee paying QTS + PGCE	T387

Grantham & South Lincolnshire ITT Partnership

- **Little Gonerby CofE Infant School (Lead School)**
- Ambergate Sports College
- Buckminster Primary School
- Cliffedale Primary School
- Denton CofE Primary School
- Harlaxton CofE Primary School
- Harrowby CofE Infant School
- Heckington St Andrews CofE Primary School
- Isaac Newton Primary School
- Long Bennington CofE Academy
- Marston Thorold's Charity CofE Primary School
- Poplar Farm School
- Ropsley C of E Primary School
- St. Mary's Catholic Voluntary Academy
- St Sebastians CofE Primary School
- The Gonerby Hill Foot CofE Primary School
- The National CofE Junior School

Application codes:

Training provider code	2DU
Fee paying QTS only	2ZX3
Fee paying QTS + PGCE	2ZX4
Salaried QTS only	2ZX6
Salaried QTS + PGCE	2ZX8

North East Lincolnshire ITT Partnership

• Yarborough Academy (Lead School)

- Barton St Peter's CofE Primary School
- East Halton Primary School
- Goxhill Primary School
- Humberston Park Special School
- Littlecoates Primary Academy
- Middlethorpe Primary School
- New Holland CofE and Methodist Primary School
- New Waltham Academy
- Queen Mary Avenue Infant and Nursery School
- Scartho Junior Academy
- Springfield Primary Academy
- St Peter's CofE Primary School
- Stanford Junior and Infant School
- Woodlands Academy

Application codes:

Training provider code	2CS
Fee paying QTS only	2ZFH
Fee paying QTS + PGCE	2ZNT
Salaried QTS only	2ZNV
Salaried QTS + PGCE	2ZNW

New schools regularly join the partnership, visit www.eoettc.com/school-partnerships for the most up to date list of schools in your area.



Wow! What a training year!

Training with EoE Teacher Training was one of the best decisions I have made in my career. I truly believe that having the opportunity to train in a school whilst completing my course has helped me to achieve my dream of becoming a confident and 'outstanding' teacher. The professional development training days allowed me to gain high quality skills that I needed to be an effective teacher, as well as supporting my confidence in the classroom. The course has also provided endless opportunities to observe outstanding teachers and visit different schools, which were invaluable in my understanding of education. This has broadened my subject knowledge and has given me a bank of exciting ideas which are creative, fun and engaging. **I got a job in my training school** which I feel is due to the training via this course and the expert mentoring I received.

At the end of my NQT year



Claire Dickens

Life as an NQT has been rewarding, varied and fulfilling. By reflecting on the training course and my experiences during this year, I recognise the impact and importance of being trained within a SCITT. The amount of extra time I spent in school teaching really made a difference to my confidence and knowledge – most importantly, this positively impacts on the children. Therefore, when I became an NQT, the 'leap' didn't feel too large, as I was so used to being in school planning, teaching and assessing. This year has still been challenging, but not as hard as I had imagined and when I look back at how far I have come and the knowledge and confidence I now have, it amazes me and excites me.

What makes us different?

- We guarantee local placements
- We recognise how challenging the training year can be and all trainees receive personalised bespoke support throughout the training year
- Our course prepares you for the holistic role of a teacher; we ensure you are fully prepared for your NQT year and beyond.
- Mentoring is high quality and we provide mentors will effective training to ensure that they can provide the best possible support to you.

Secure Your Future Now - Get in Touch

traintoteach@eoettc.com

www.eoettc.com

@EoE_TTC